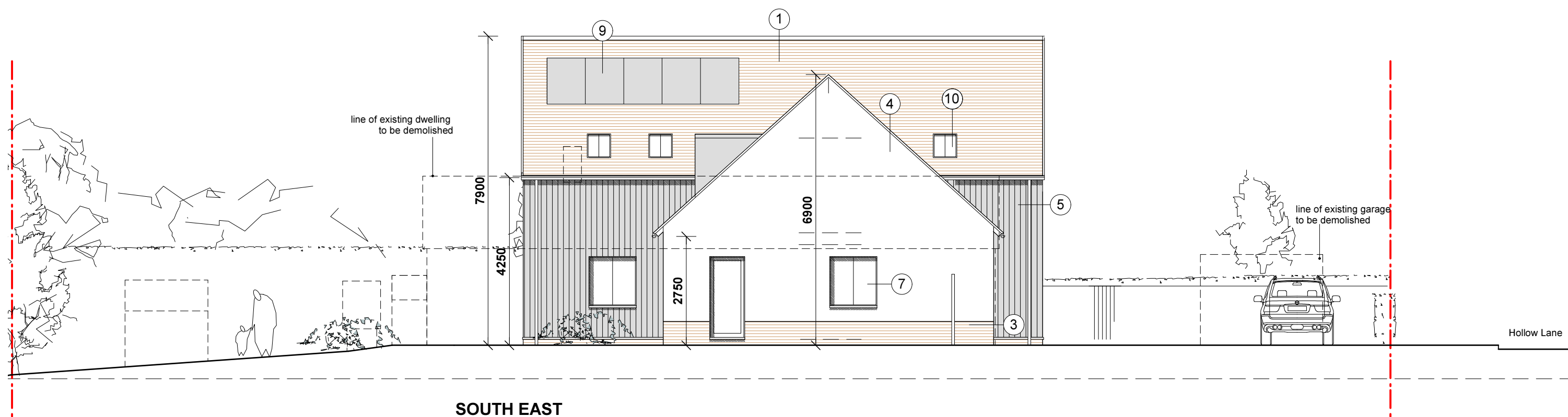
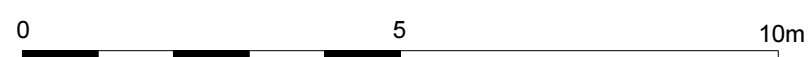


**NORTH EAST (FRONT)
ELEVATION**



**SOUTH EAST
(SIDE) ELEVATION**

- KEY TO MATERIALS:**
- 1 - red clay plain tiles (wienerberger alban sussex blend)
 - 2 - natural slate
 - 3 - red brick plinth (ibstock swanage handmade light red) with chamfer/ ppc aluminium flashing (grey)
 - 4 - painted render (white)
 - 5 - stained siberian larch (tecknos 'bourton') board on board
 - 6 - ppc aluminium door frames (grey)
 - 7 - ppc aluminium window frames (grey)
 - 8 - stained siberian larch (tecknos 'bourton') barge boards/ soffits
 - 9 - solar photovoltaic panels
 - 10 - velux rooflights



Project PLANCHEWAY, HOLLOW LANE, THURSTON, IP30 3RG		hitchcock architects ltd 18 The Avenue Sunbury-on-Thames Middx TW16 5ES m: 07855 522478 e: andrew@hitchcockarchitects.co.uk w: www.hitchcockarchitects.co.uk
Drawing PROPOSED NE & SE ELEVATIONS		
Drawing No. PHL - 08	Scale 1:100 @ A3	Date 25.11.2016

